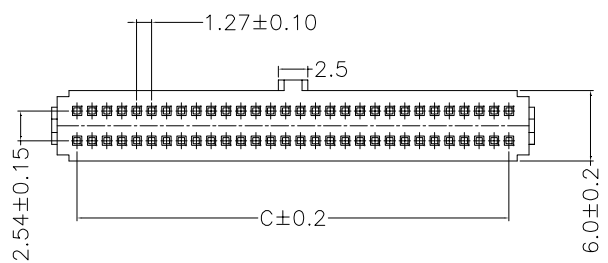
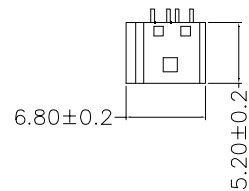
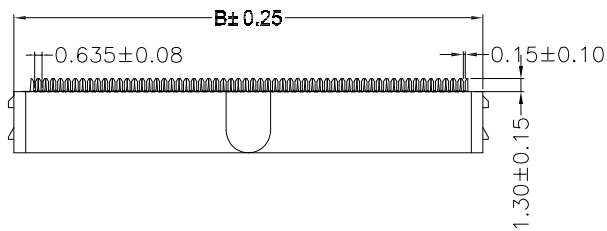
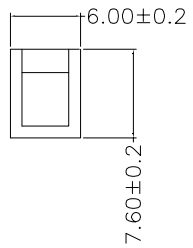
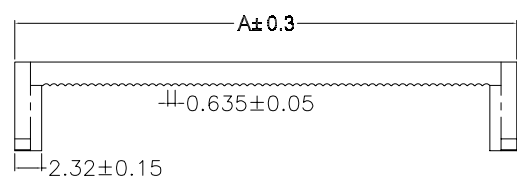
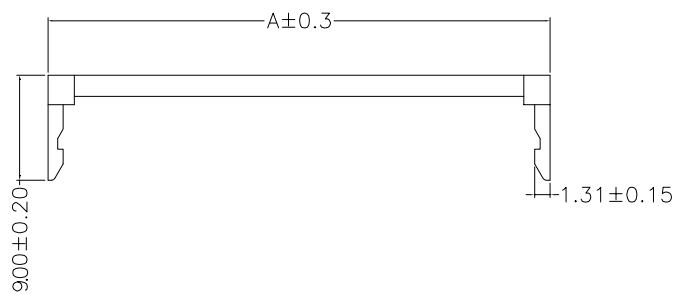


零件图	成品图	客户图
		○

REVISION DATA				
REV	ECN No.	DESCRIPTION	NAME	DATE
A0		NEW DRAWING	JIN	2020-10-22



MATERIAL:

Insulator: PBT+30% Glass Fiber(UL94V-0)
 Contact : phosphor Bronze or Brass
 Contact Plated : Gold or Tin over Nickel.

ELECTRICAL CHARACTERISTICS :

Current Rating :1 Amp.
 withstanding Voltage :AC 500V r.m.s.
 Insulation Resistance :1000 Megohms Minimum
 at DC 500V.
 Contact Resistance :15 Milliohms Maximum.
 Operating Temperature :-40c~105c.

ENKCOM® 东莞市恩康电子科技有限公司
 www.enkcom.com
 TEL:+86(0)769 8904 9672
 FAX:+86(0)769 8904 9671
 E-MAIL:sales@anycom.tw
DONGGUAN ENKANG ELECTRONICS TECHNOLOGY CO.,LTD

TOLERANCE	DATE :	2020-10-22	TITLE:				
	ANGLE ±5°	DRAWN :	JIN	IDC PH1.27*2.54mm			
	X.XXX ±0.15	CHECKED :		PART NO: IDCF1001			
	X.XX ±0.25	APPROVED :					
X.X ±0.40	PROJECTON		REV: A0	UNIT: mm	SCALE: 1:1	SIZE: A4	PAGE 1/1
X. ±0.50							