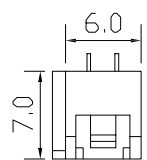
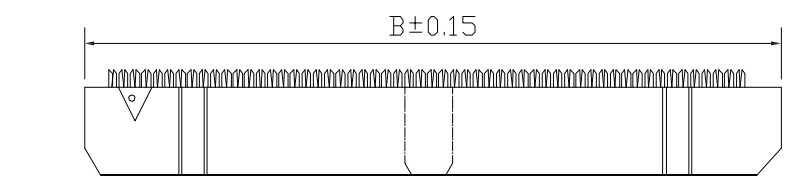
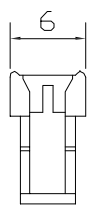
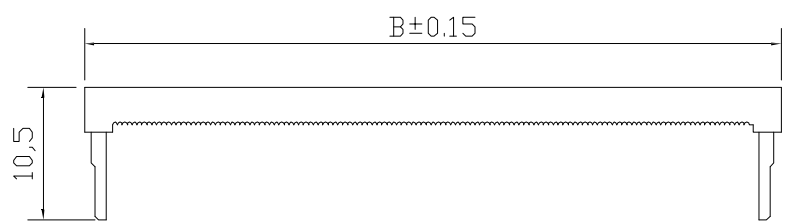
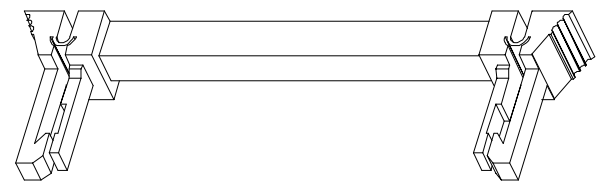
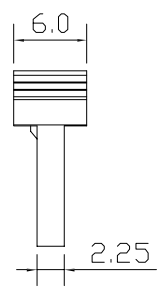
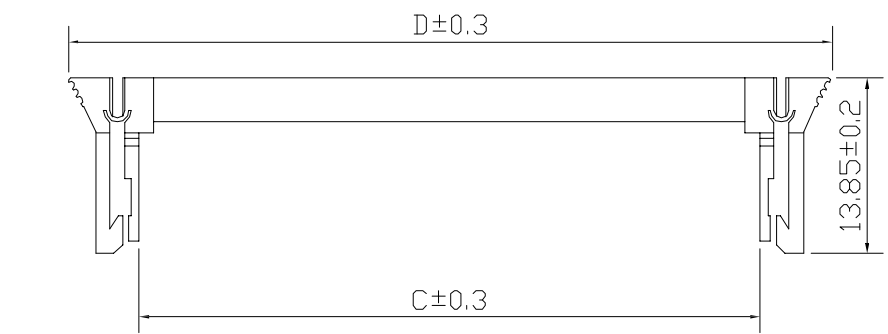


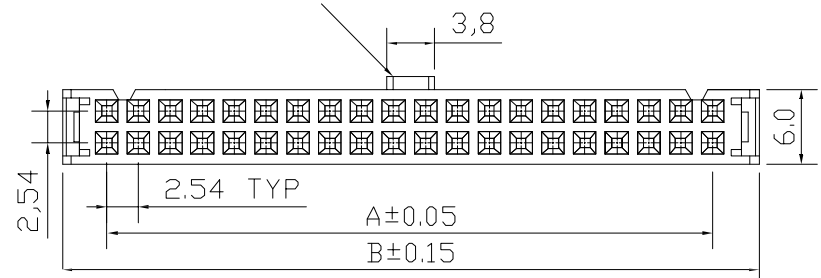
零件图	成品图	客户图
		○

REVISION DATA				
REV	ECN No.	DESCRIPTION	NAME	DATE
A0		NEW DRAWING	D.Y.Y	2020-05-23



PIN 位数	Dim. A	Dim. B	Dim. C	Dim. D
6P	5.08	12.32	9.0	22.1
8P	7.62	14.86	11.54	24.64
10P	10.16	17.40	14.08	27.18
12P	12.7	19.94	16.62	29.72
14P	15.24	22.48	19.16	32.26
16P	17.78	25.02	21.70	34.80
20P	22.86	30.10	26.78	39.88
24P	27.94	35.18	31.86	44.96
26P	30.48	37.72	34.40	47.50
30P	35.56	42.80	39.48	52.58
34P	40.64	47.88	44.56	57.66
40P	48.26	55.5	52.18	65.28
50P	60.96	68.20	64.88	77.98
60P	73.66	80.90	77.58	90.68
64P	78.74	85.98	82.66	95.76

6p-8p无槽; 10-12p 单槽; 14P-64P双槽  
IDC主体:有凸和无凸之分.



**ENKCOM®** 东莞市恩康电子科技有限公司  
 www.enkcom.com  
 TEL:+86(0)769 8904 9672  
 FAX:+86(0)769 8904 9671  
 E-MAIL:sales@anycom.tw

**DONGGUAN ENKANG ELECTRONICS TECHNOLOGY CO.,LTD**

TOLERANCE	DATE :	2020-05-23	TITLE:					
ANGLE ±5°	DRAWN :	D.Y.Y	PH2.54mm IDC三件式 (蝴蝶扣)					
X.XXX ±0.15	CHECKED :		PART NO: IDCF309					
X.XX ±0.25	APPROVED :							
X.X ±0.40	PROJECTON		REV: A0	UNIT: mm	SCALE: 1:1	SIZE: A4	PAGE 1/1	
X. ±0.50								