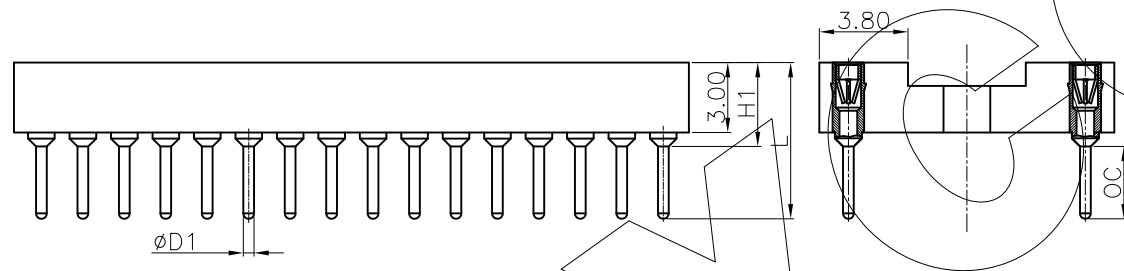
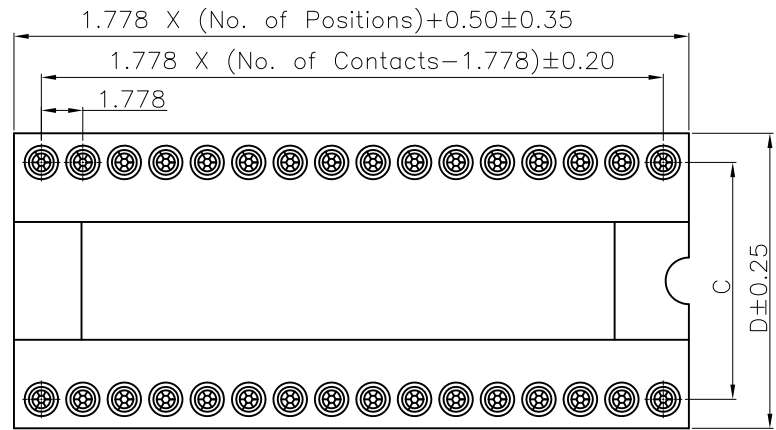


零件图	成品图	客户图
		○

REVISION DATA				
REV	ECN No.	DESCRIPTION	NAME	DATE
A0		NEW DRAWING	Songjun	2020-10-17

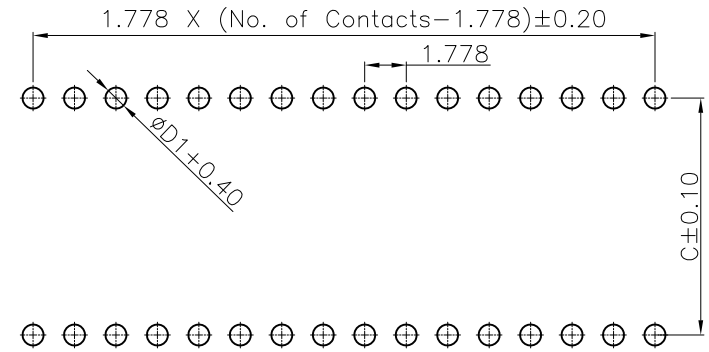


Technical Data

Material:
 Contact Material: Copper Alloy
 Contact plating: Au or Sn Over Ni
 Insulator Material: PPS, UL94 V-0

Electrical:
 Rating current: 2Amps/contact max.
 Rating voltage : 60 V AC/DC
 Contact resistance: ≤4mΩ/contact
 Insulation resistance: ≥1000MΩ
 Withstanding Voltage: 500V AC/minute

Mechanical:
 Operating temperatures: Gold Plated: -55°C to +105°C
 Tin plated: -40°C to +105°C
 Soldering temperature: +260°C, max(PPS)



DIM.	D1	OC	H1	L	PIN	C	D			
	0.43	2.80	3.00	5.80				20~48P	10.16	12.65
	0.46	3.10	3.80	6.90				20~68P	15.24	17.73
	0.55	3.40	4.50	7.90	64P	19.05	21.54			

Dim D1&OC&H1&L can be customized by customers

Recommended P.C.B Layout
 General Tolerance ±0.05

PF	D	XXX	X	7	G	X	XX	XXXXX	D	00
Angel Options A A TYPE B B TYPE	No. of Positions XXX Positions	Dip Spacing 0 No 1 1.27mm 2 2.54mm 3 7.62mm 4 10.16mm 5 2.54mm 6 15.24mm 9 22.86mm A 2.00mm S Special	Insulator Height 0 No 1 1.20 mm 2 1.90 mm 3 2.80 mm 4 2.10 mm 5 2.80 mm 7 3.00 mm 8 3.80 mm 9 4.10 mm A 4.20 mm B 7.00 mm S Special	Insulator type G-PPS +NO BAR	Pin Plated 0 No 1 Tin120u" 2 Tin200u" 3 Gold40u" 4 Gold80u" 5 Gold1u" 6 Gold15u" 7 Gold2u" 8 Gold3u" 9 Gold5u" A Gold8u" B Gold10u" C Gold15u" D Gold30u" E Ag plated F Nickel 80u"	Clip plated 1 Tin120u" 2 Tin200u" 3 Gold40u" 4 Gold80u" A-5 Gold1u" L-6 Gold15u" B-7 Gold2u" C-8 Gold3u" D-9 Gold5u" A Gold8u" B Gold10u" L Gold15u" D Gold30u" E Ag plated F Nickel 80u"	Pin length(mm) XXXXX XXXmm S Special	Insulator Option D No	Series 00 No	

ANYCONN®
 www.anyconn.com
 TEL:+86(0)769 8904 9672
 FAX:+86(0)769 8904 9671
 E-MAIL:sales@anyconn.tw

东莞市恩康电子科技有限公司
DONGGUAN ENKANG ELECTRONICS TECHNOLOGY CO.,LTD

TOLERANCE	DATE :	2020-10-17	TITLE:	PH1.778 IC Sockets Female Dual Row 180° Dip			
ANGLE ±5°	DRAWN :	Songjun	PART NO: PFDXXXX7GXXXXXXXD00				
X.XXX ±0.15	CHECKED :						
X.XX ±0.25	APPROVED :						
X.X ±0.40	PROJECTON		REV: A0	UNIT: mm	SCALE: 1:1	SIZE: A4	PAGE: 1/1
X. ±0.50							