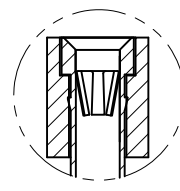
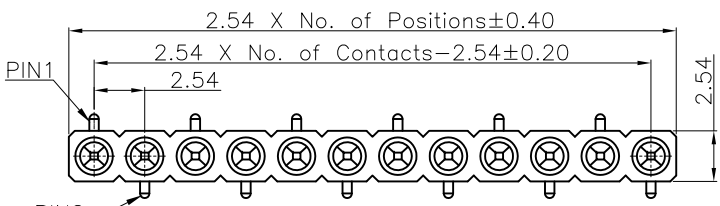
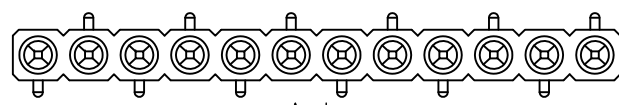


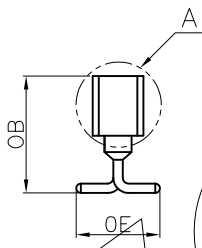
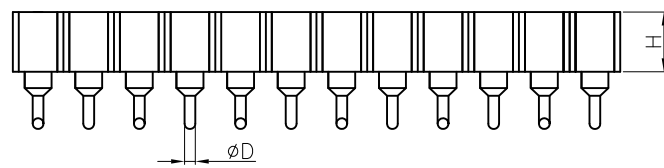
REVISION DATA				
REV	ECN No.	DESCRIPTION	NAME	DATE
A0		NEW DRAWING	Songjun	2020-10-17



DETAIL A
SC 2:1



A type

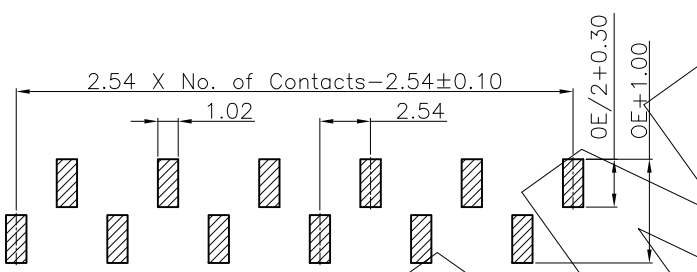


Technical Data

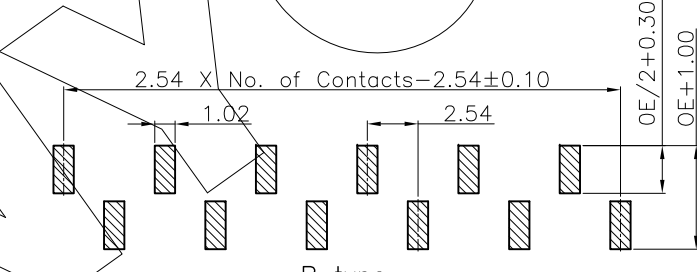
Material:
Contact Material: Copper Alloy
Contact plating: Au or Sn Over Ni
Insulator Material: PPS, UL94 V-0

Electrical:
Rating current: 3Amps/contact max.
Rating voltage : 60 V AC/DC
Contact resistance: $\leq 4m\Omega$ /contact
Insulation resistance: $\geq 1000M\Omega$
Withstanding Voltage: 500V AC/minute

Mechanical:
Operating temperatures: Gold Plated: $-55^{\circ}C$ to $+105^{\circ}C$
Tin plated: $-40^{\circ}C$ to $+105^{\circ}C$
Soldering temperature: $+260^{\circ}C$, max(PPS)



A type
Recommended P.C.B Layout
General Tolerance ± 0.05



B type
Recommended P.C.B Layout
General Tolerance ± 0.05

DIM.	H	OE	OB	D
	3.00	4.20	5.80	0.47
	1.90	4.50	4.20	0.50
	1.20	4.80	4.00	0.50
	7.00	4.20	8.90	0.60
	4.20	4.20	5.60	0.60

Dim H&OE&OB&D can be customized by customers

PB	X	XXX	0	X	E	X	XX	XXXXX	0	00
Angel Options A TYPE A B TYPE B	No. of Positions XXX Positions	Dip Spacing 0 No 1 1.27mm 2 2.54mm 3 7.62mm 4 2.54mm 5 2.54mm 6 10.16mm 7 3.90mm 8 3.80mm 9 4.10mm A 2.00mm S Special	Insulator Height 0 No 1 1.20mm 2 1.90mm 3 2.90mm 4 2.10mm 5 2.90mm 6 3.90mm 7 3.90mm 8 3.80mm 9 4.10mm A 4.20mm B 7.00mm S Special	Insulator type E PPS Single Row F PPS Two Row	Pin Plated 0 No 1 Tin120u" 2 Tin200u" 3 Gold10.4u" 4 Gold0.8u" 5 Gold1u" 6 Gold1.5u" 7 Gold2u" 8 Gold3u" 9 Gold5u" A Gold8u" B Gold10u" C Gold15u" D Gold30u" E Ag plated F Nickel 80u"	Clip plated 1 Tin120u" 2 Tin200u" 3 Gold10.4u" 4 Gold0.8u" 5 Gold1u" 6 Gold1.5u" 7 Gold2u" 8 Gold3u" 9 Gold5u" A Gold8u" B Gold10u" C Gold15u" D Gold30u" E Ag plated F Nickel 80u"	Pin length(mm) XXXXX XX.Xmm S Special	Insulator Option 0 No	Series 00 No	

ANYCONN® 东莞市恩康电子科技有限公司
 www.anyconn.com
 TEL:+86(0)769 8904 9672
 FAX:+86(0)769 8904 9671
 E-MAIL:sales@anyconn.com

DONGGUAN ENKANG ELECTRONICS TECHNOLOGY CO.,LTD

TOLERANCE	DATE :	2020-10-17	TITLE:	PH2.54 IC Sockets Female Single Row SMT			
ANGLE $\pm 5^{\circ}$	DRAWN :	Songjun	PART NO: PBXXXX0XEXXXXXXXX000				
X.XXX ± 0.15	CHECKED :						
X.XX ± 0.25	APPROVED :						
X.X ± 0.40	PROJECTON		REV: A0	UNIT: mm	SCALE: 1:1	SIZE: A4	PAGE: 1/1
X. ± 0.50							