

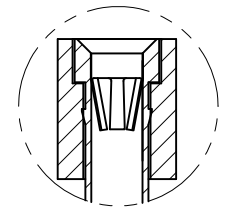
REVISION DATA				
REV	ECN No.	DESCRIPTION	NAME	DATE
A0		NEW DRAWING	Songjun	2020-10-17

Technical Data

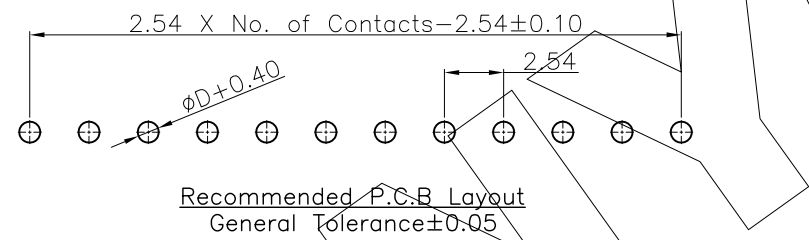
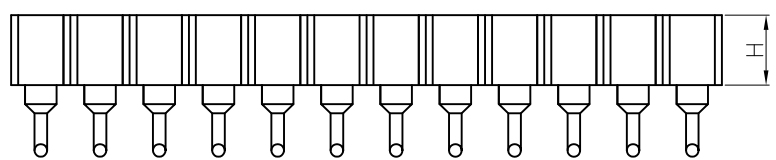
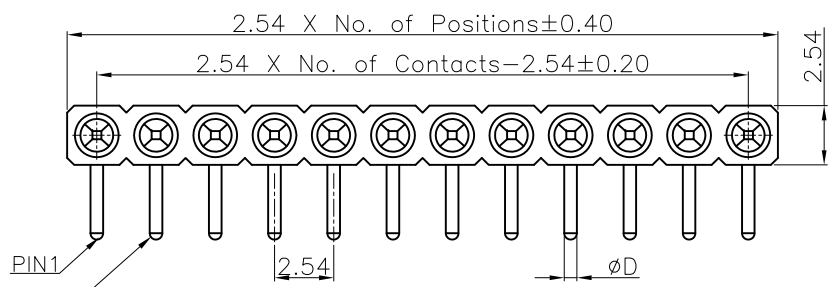
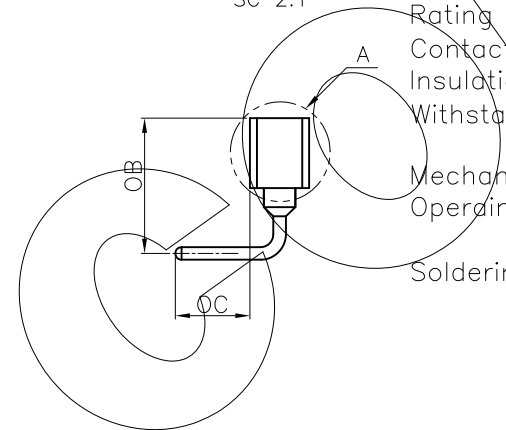
Material:
 Contact Material: Copper Alloy
 Contact plating: Au or Sn Over Ni
 Insulator Material: PPS, UL94 V-0

Electrical:
 Rating current: 3Amps/contact max.
 Rating voltage : 60 V AC/DC
 Contact resistance: $\leq 4m\Omega$ /contact
 Insulation resistance: $\geq 1000M\Omega$
 Withstanding Voltage: 500V AC/minute

Mechanical:
 Operating temperatures: Gold Plated: $-55^{\circ}C$ to $+105^{\circ}C$
 Tin plated: $-40^{\circ}C$ to $+105^{\circ}C$
 Soldering temperature: $+260^{\circ}C$, max(PPS)



DETAIL A
SC 2:1



DIM.	H	OC	OB	D
	3.00	3.20	5.80	0.54
	1.90	3.00	4.00	0.60
	1.20	2.80	3.20	0.50
	7.00	3.20	8.30	0.60
	4.20	3.00	6.00	0.50

Dim H&OC&OB&D can be customized by customers

PB	R	XXX	0	X	E	X	XX	XXXXX	0	00
Angel Options D 180° R 90° S SMT H HSMT	No. of Positions XXX Positions	Dip Spacing 0 No 1 1.27mm 2 2.54mm 3 7.62mm 4 10.16mm 6 15.24mm 9 22.86mm A 2.00mm S Special	Insulator Height 0 No 1 1.20mm 2 1.90mm 3 2.00mm 4 2.40mm 5 2.20mm 6 2.80mm 7 3.00mm 8 3.80mm 9 4.10mm A 4.20mm B 7.00mm S Special	Insulator type E PPS Single Row F PPS Two Row	Pin Plated 0 No 1 Tin120u" 2 Tin200u" 3 Gold10u" 4 Gold50u" 5 Gold11u" 6 Gold15u" 7 Gold25u" 8 Gold35u" 9 Gold55u" A Gold85u" B Gold100u" C Gold150u" D Gold300u" E Ag plated F Nickel 80u"	Clip plated 00 No A 1 Tin120u" B 2 Tin200u" C 3 Gold10u" L 4 Gold50u" A 5 Gold11u" B 6 Gold15u" C 7 Gold25u" D 8 Gold35u" E 9 Gold55u" A 10 Gold85u" B 11 Gold100u" C 12 Gold150u" D 13 Gold300u" L 14 Ag plated F 15 Nickel 80u"	Pin length(mm) XXXXX XX.XXmm S Special	Insulator Option 0 No	Series 00 No	

ANYCONN®
 www.anyconn.com
 TEL:+86(0)769 8904 9672
 FAX:+86(0)769 8904 9671
 E-MAIL:sales@anyconn.com

东莞市恩康电子科技有限公司
DONGGUAN ENKANG ELECTRONICS TECHNOLOGY CO.,LTD

TOLERANCE	DATE :	2020-10-17	TITLE:	PH2.54 IC Sockets Female Single Row 90° DIP
ANGLE $\pm 5^{\circ}$	DRAWN :	Songjun	CHECKED :	
X.XXX ± 0.15	APPROVED :		PART NO:	PBRXXX0XEXXXXXXXXXX000
X.XX ± 0.25	PROJECTON		REV:	A0
X.X ± 0.40			UNIT:	mm
X. ± 0.50			SCALE:	1:1
			SIZE:	A4
			PAGE:	1/1