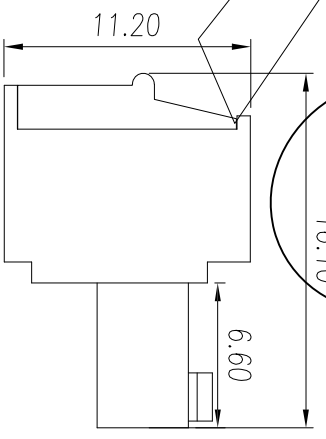
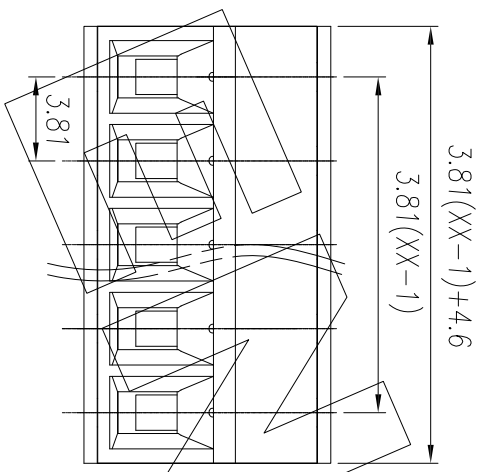
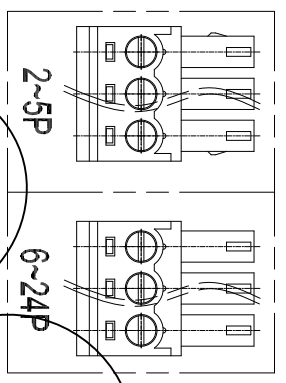
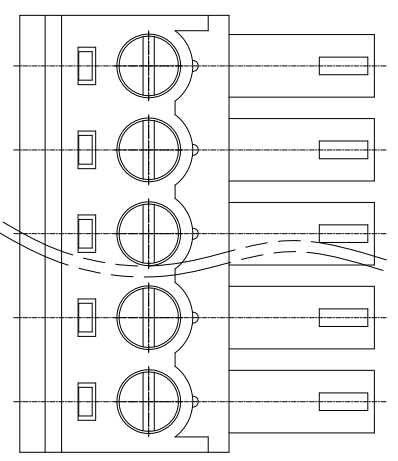


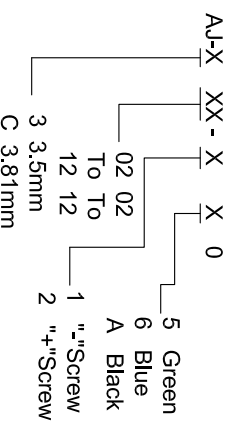
REVISION DATA			
REV	ECN No.	DESCRIPTION	NAME DATE
A0		NEW DRAWING	D.Y.Y 2019-07-16



UL/CUL 技术参数		eSALUS			
UL/CUL Technical Data		B	C	D	
等级	Use Group				
额定电压	Rated Voltage	M	300	300	
额定电流	Rated Current	A	8	8	
导线范围	Wire Range			28-16	
单/多芯线	Solid/Stranded	A/WG			
耐电压	Withstanding Voltage		1800V/1min		

IEC 技术参数		OE			
IEC Technical Data		III	III	II	
过电压类别	Overvoltage Category				
污染等级	Contamination Class	3	2	2	
额定电压	Rated Voltage	M	180	180	250
额定电流	Rated Current	A	7	7	7
额定冲击电压	Impulse withstand voltage	[kV]	2.5	2.5	2.5
导线截面积	Conductor cross section				0.5-1.5
绝缘厚度	Insulation thickness	[mm]			

材料		其他参数	
绝缘材料	Insulation Material	间距 Pitch	Poles
阻燃等级	Inflammability	额定长度	Stripping Length
导体材料	Conductor Material	螺丝 Screw/扭矩	Torque(Max)
表面处理层	Conductive Coating	工作温度	Operating temperature
		焊接温度	Soldering temperature
		引脚尺寸	Pin Dimensions
		PCB钻孔直径	PCB Hole Diameter



linear dimension (Tolerances Standard GB/T 14486-2008)		—		□		┌	
variable range	to	over	to	over	to	over	to
tolerance	±0.20	±0.30	±0.50	±0.70	±1.00	±1.30	±1.60

ENKCOM 东莞市恩康电子科技有限公司
DONGGUAN ENKANG ELECTRONICS TECHNOLOGY CO.,LTD

www.enkcom.com

DATE: 2019-07-16
DRAWN: D.Y.Y
CHECKED:
APPROVED:
PROJECTON

TITLE: AJ Pitch 3.81m Series

PART NO: A1CXX1X0F

REV: A0 UNIT: mm SCALE: 1:1 SIZE: A4 PAGE: 1/1

TOLERANCE ANGLE ±5%
X.XXX ±0.10
X.XX ±0.20
X.X ±0.30
X ±0.50