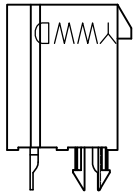
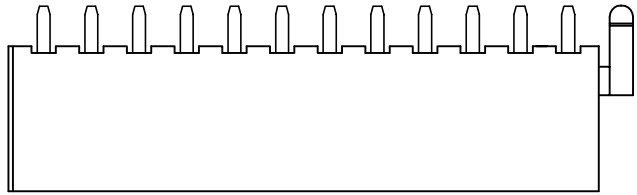


零件图	成品图	客户图
		○

REVISION DATA				
REV	ECN No.	DESCRIPTION	NAME	DATE
A0		NEW DRAWING	D.Y.Y	2023-03-27



2x2P以下喷码位置

Technical Data

Material:
Terminal: High Performance Copper Alloy(C1100)
Plating:
Contact Area: Selective Plating.
Soldering Area: Gold or 100u" Matte Tin Plating.
Under Plating: Nickel Plating 50u" thickness Min. over all
Housing: See the Part No.
CAP: LCP, UL94V-0, HF, Color: Black

Product Specification Refer To : EK-QB-GC-290A

Operating temperatures: Gold Plated: -55°C to +105°C
Tin plated: -40°C to +105°C

Part No: WFJD12 XXX XX XX X D X 20

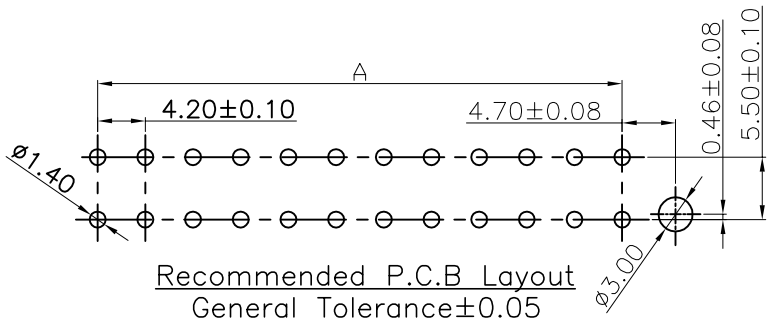
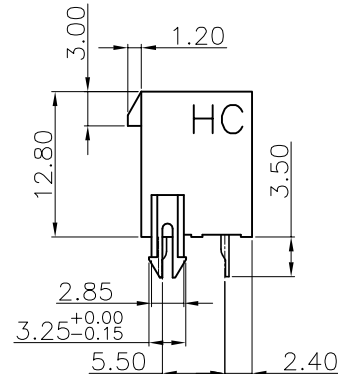
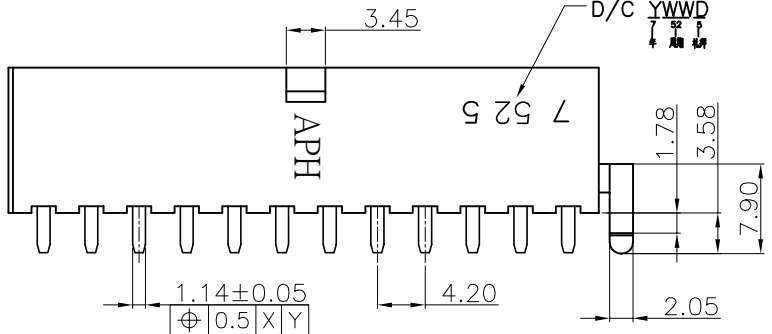
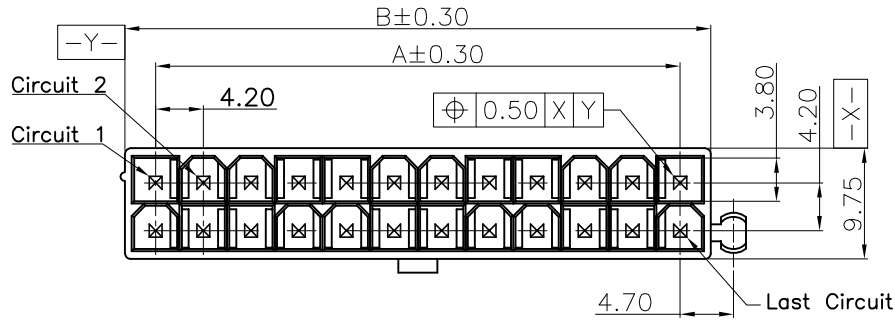
PIN数: 002 (2x1P)
004 (2x2P)
006 (2x3P)
..... 以此类推

电镀规格:
T3: 100u" 雾锡 (Matte Tin)
G1: 全金1u" (Full Gold Flash)
G6: 全金测点镀金10u"
G7: 全金测点镀金15u"
G8: 全金测点镀金30u"
M7: 半金雾锡测点镀金10u"
M7: 半金雾锡测点镀金15u"
M8: 半金雾锡测点镀金30u"

定位柱规格:
N: 无定位柱
K: 带外侧双卡柱
W: 左侧单外卡柱 (筋条方向)
M: 右侧单外卡柱 (无筋条方向)

HOUSING 塑胶材质:
CB: PA6T 黑色 (Black) HF
DB: LCP 黑色 (Black) HF
CN: PA6T 本色 (Natural) HF
DN: LCP 本色 (Natural) HF

CAP帽/包装方式:
A: 无CAP/盘装
B: 无CAP/卷装 PH: 28.0mm
C: 有CAP/卷装 PH: 28.0mm



Pin	Dimensions	
	A	B
2x1PIN	5.40	5.40
2x2PIN	4.20	9.60
2x3PIN	8.40	13.80
2x4PIN	12.60	18.00
2x5PIN	16.80	22.20
2x6PIN	21.00	26.40
2x7PIN	25.20	30.60
2x8PIN	29.40	34.80
2x9PIN	33.60	39.00
2x10PIN	37.80	43.20
2x11PIN	42.00	47.40
2x12PIN	46.20	51.60

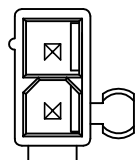
ANYCONN[®] 东莞市恩康电子科技有限公司
www.enkcom.com
TEL: +86(0)769 8904 9672
FAX: +86(0)769 8904 9671
E-MAIL: sales@anyconn.com

DONGGUAN ENKANG ELECTRONICS TECHNOLOGY CO.,LTD

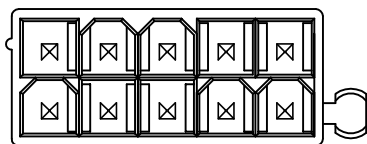
TOLERANCE	DATE : 2023-03-27	TITLE: Mini Power Plus Connect PH4.20 Straight DIP Type
ANGLE ±5°	DRAWN : D.Y.Y	PART NO: WFJD12XXXXXXXXDX20
X.XXX ±0.10	CHECKED :	
X.XX ±0.20	APPROVED :	
X.X ±0.30	PROJECTON	REV: A0
X. ±0.50		UNIT: mm
		SCALE: 1:1
		SIZE: A4
		PAGE: 1/2

零件图	成品图	客户图
		○

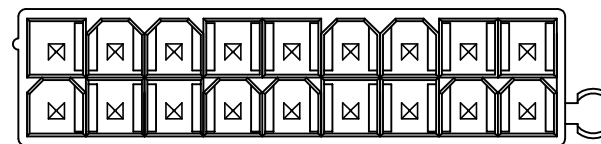
REVISION DATA				
REV	ECN No.	DESCRIPTION	NAME	DATE
A0		NEW DRAWING	D.Y.Y	2023-03-27



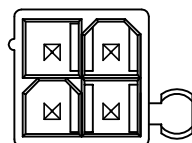
2x1P



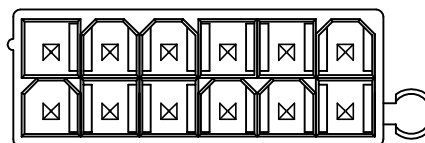
2x5P



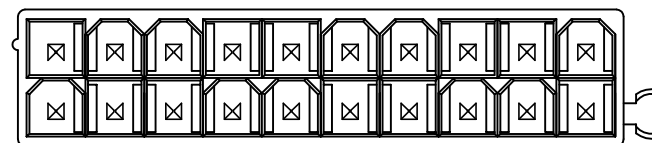
2x9P



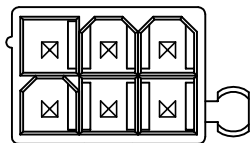
2x2P



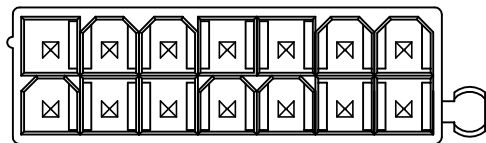
2x6P



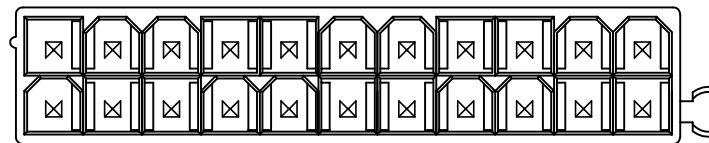
2x10P



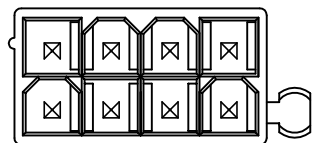
2x3P



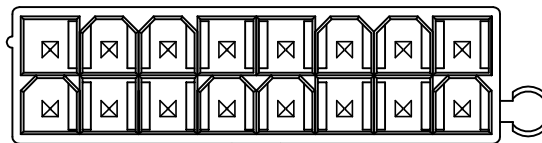
2x7P



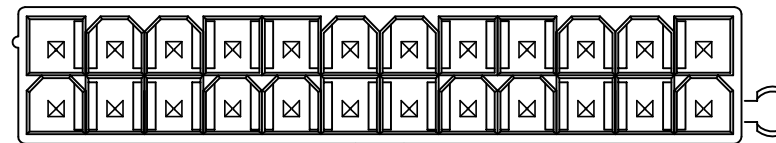
2x11P



2x4P



2x8P



2x12P

ANYCONN[®]
 www.enkcom.com
 TEL:+86(0)769 8904 9672
 FAX:+86(0)769 8904 9671
 E-MAIL:sales@anycom.tw

东莞市恩康电子科技有限公司

DONGGUAN ENKANG ELECTRONICS TECHNOLOGY CO.,LTD

TOLERANCE ANGLE ±5° X.XXX ±0.10 X.XX ±0.20 X.X ±0.30 X. ±0.50	DATE :	2023-03-27	TITLE: Mini Power Plus Connect PH4.20 Straight DIP Type			
	DRAWN :	D.Y.Y				
	CHECKED :		PART NO: WFJD12XXXXXXXXDX20			
	APPROVED :					
PROJECTON		REV: A0	UNIT: mm	SCALE: 1:1	SIZE: A4	PAGE: 2/2