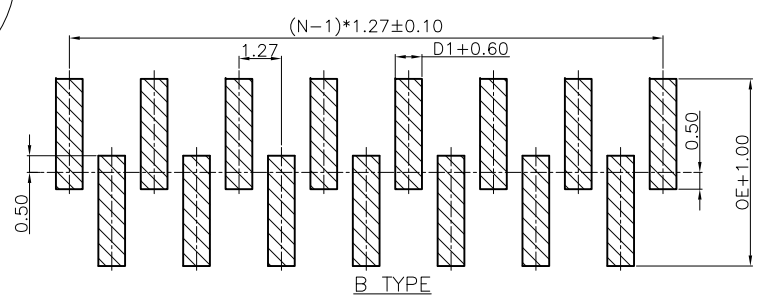
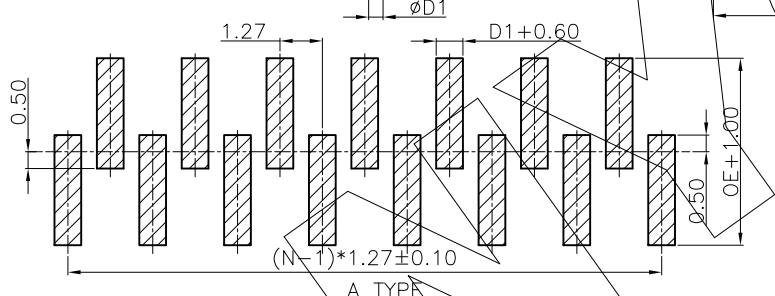
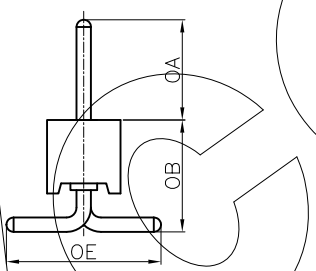
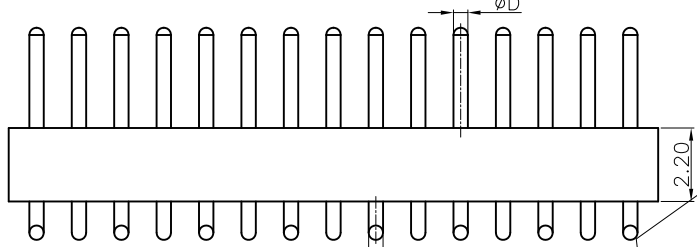
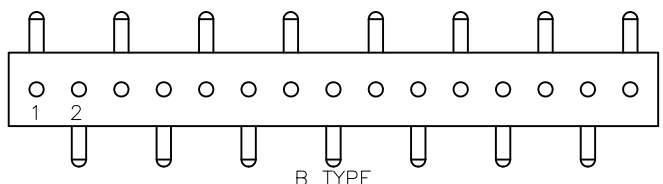
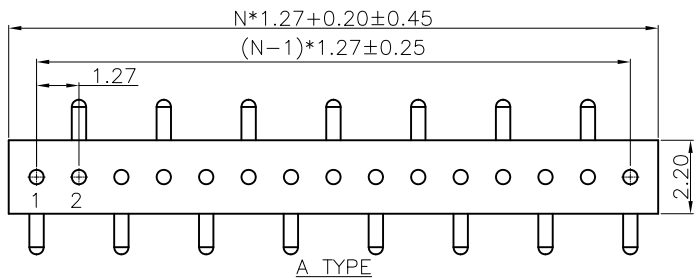


零件图 成品图 客户图

REVISION DATA				
REV	ECN No.	DESCRIPTION	NAME	DATE
A0		NEW DRAWING	Songjun	2020-10-17



**Technical Data**  
 Material:  
 Contact Material: Copper Alloy  
 Contact plating: Au or Sn Over Ni  
 Insulator Material: PA46, UL94 V-0  
 Electrical:  
 Rating current: 1Amps/contact max.  
 Rating voltage : 60 V AC/DC  
 Contact resistance: ≤4mΩ/contact  
 Insulation resistance: ≥1000MΩ  
 Withstanding Voltage: 500V AC/minute  
 Mechanical:  
 Operating temperatures: Gold Plated: -55°C to +105°C  
 Tin plated: -40°C to +105°C  
 Soldering temperature: +260°C, max(PA46)

	OA	OC	D	D1	OB
DIM.	2.50	2.00	0.40	0.40	6.70
	3.00	2.50	0.55	0.55	7.70
	3.50	2.80	0.60	0.60	8.50

Dim OA&OC&D&D1&OB can be customized by customers

Recommended P.C.B Layout  
 General Tolerance ±0.05

Recommended P.C.B Layout  
 General Tolerance ±0.05

PG	X	XXX	0	5	I	X	00	XXXXX	0	00
Angel Options A A TYPE B B TYPE	No. of Positions XXX Positions	Dip Spacing 0 No 1 1.27mm 2 1.27mm 3 2.54mm 4 2.54mm 5 7.62mm 6 10.16mm 7 10.16mm 8 15.24mm 9 22.86mm A 2.00mm S Special	Insulator Height 0 No 1 1.20mm 2 1.30mm 3 2.00mm 4 2.40mm 5 2.20mm 6 2.80mm 7 3.00mm 8 3.80mm 9 4.10mm A 4.20mm B 7.00mm S Special	Insulator type I PA46 Single Row J PA46 Two Row	Pin Plated 0 No 1 Tin20u" 2 Tin200u" 3 Gold0.4u" 4 Gold0.8u" 5 Gold1u" 6 Gold1.5u" 7 Gold2u" 8 Gold3u" 9 Gold5u" A Gold8u" B Gold10u" C Gold15u" D Gold20u" E Ag plated F Nickel80u"	Clip plated 00 No 1 Tin20u" 2 Tin200u" 3 Gold0.4u" 4 Gold0.8u" 5 Gold1u" 6 Gold1.5u" 7 Gold2u" 8 Gold3u" 9 Gold5u" A Gold8u" B Gold10u" C Gold15u" D Gold20u" E Ag plated F Nickel80u"	Pin length(mm) XXXXX XX.Xmm S Special	Insulator Option 0 No	Series 00 No	

**ANYCONN®** 东莞市恩康电子科技有限公司  
 www.anyconn.com  
 TEL:+86(0)769 8904 9672  
 FAX:+86(0)769 8904 9671  
 E-MAIL:sales@anyconn.com

**DONGGUAN ENKANG ELECTRONICS TECHNOLOGY CO.,LTD**

TOLERANCE	DATE :	2020-10-17	TITLE:
ANGLE ±5°	DRAWN :	Songjun	PH1.27 IC Sockets Male Single Row SMT
X.XXX ±0.15	CHECKED :		PART NO: PGXXXX051X00XXXXX000
X.XX ±0.25	APPROVED :		
X.X ±0.40	PROJECTON		
X. ±0.50	REV: A0	UNIT: mm	SCALE: 1:1
		SIZE: A4	PAGE: 1/1