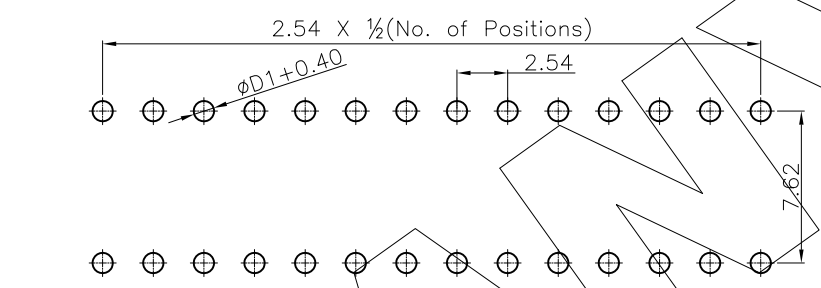
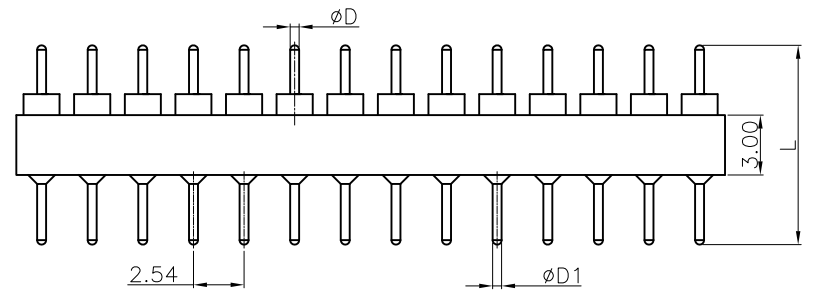
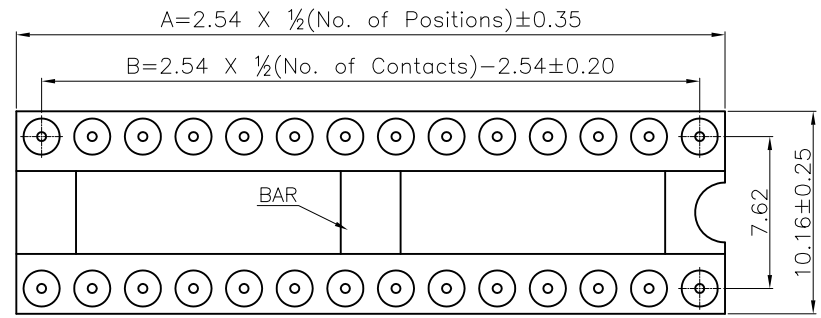


零件图 成品图 客户图

REVISION DATA				
REV	ECN No.	DESCRIPTION	NAME	DATE
A0		NEW DRAWING	Songjun	2020-10-17



Recommended P.C.B. Layout
General Tolerance ± 0.05

PA	D	XXX	3	7	X	X	00	XXXXX	D	00
Angel Options D 180° R 90° S SMT H H-SMT	No. of Positions XXX Positions	Dip Spacing 0 No 1 1.27mm 2 2.54mm 3 7.62mm 4 10.16mm 5 15.24mm 6 15.24mm 7 3.00mm 8 3.80mm 9 4.10mm A 4.20mm B 7.00mm S Special	Insulator Height 0 No 1 1.20mm 2 1.90mm 3 2.90mm 4 2.10mm 5 2.20mm 6 2.50mm 7 3.00mm 8 3.80mm 9 4.10mm A 4.20mm B 7.00mm S Special	Insulator type G PPS+NO BAR H PPS+WITH BAR	Pin Plated 0 No 1 Tin120u" 2 Tin200u" 3 Gold0.4u" 4 Gold0.8u" 5 Gold1u" 6 Gold1.5u" 7 Gold2u" 8 Gold3u" 9 Gold5u" A Gold8u" B Gold10u" C Gold15u" D Gold30u" E Ag plated F Nickel 80u"	Clip plated 0 No 1 Tin120u" 2 Tin200u" 3 Gold0.4u" 4 Gold0.8u" 5 Gold1u" 6 Gold1.5u" 7 Gold2u" 8 Gold3u" 9 Gold5u" A Gold8u" B Gold10u" C Gold15u" D Gold30u" E Ag plated F Nickel 80u"	Pin length(mm) XXXXX XXXmm S Special	Series 00 No		

Technical Data

Material:
Contact Material: Copper Alloy
Contact plating: Au or Sn Over Ni
Insulator Material: PPS, UL94 V-0

Electrical:
Rating current: 3Amps/contact max.
Rating voltage : 60 V AC/DC
Contact resistance: ≤ 4mΩ/contact
Insulation resistance: ≥ 1000MΩ
Withstanding Voltage: 500V AC/minute

Mechanical:
Operating temperatures: Gold Plated: -55°C to +105°C
Tin plated: -40°C to +105°C
Soldering temperature: +260°C, max(PPS)

Pin No.	DIM "A"	DIM "B"	TYPE
6	7.62	5.08	No BAR
8	10.16	7.62	
10	12.70	10.16	
12	15.24	12.70	
14	17.78	15.24	
16	20.32	17.78	
18	22.86	20.32	
20	25.4	22.86	
24	30.48	27.94	
26	33.02	35.56	
28	35.56	33.02	

	D	D1	0A	0C	0C1	L
DIM.	0.45	0.45	3.00	2.50	3.00	9.00
	0.47	0.50	3.50	3.00	3.60	9.60
	0.50	0.60	4.20	3.30	4.00	11.20

Dim D&D1&0A&0C&0C1&L can be customized by customers

ANYCONN® 东莞市恩康电子科技有限公司
www.anyconn.com
TEL:+86(0)769 8904 9672
FAX:+86(0)769 8904 9671
E-MAIL:sales@anyconn.com

DONGGUAN ENKANG ELECTRONICS TECHNOLOGY CO.,LTD

TOLERANCE	DATE : 2020-10-17	TITLE:
ANGLE ±5°	DRAWN : Songjun	PH2.54 IC Sockets Male Dual Row 180° DIP
X.XXX ±0.15	CHECKED :	PART NO: PADXXX37XX00XXXXXD00
X.XX ±0.25	APPROVED :	
X.X ±0.40	PROJECTON	
X. ±0.50	PROJECTON	REV: A0 UNIT: mm SCALE: 1:1 SIZE: A4 PAGE: 1/1